



# PORTABLE POWER STATION

## ATZ 3600EU



# Product Introduction

The ATZ series stands out as a reliable portable power station, perfect for a variety of applications including outdoor adventures, emergency home backup power, and more. The outstanding power output of the ATZ series, which has numerous AC and DC output interfaces, reaches up to 3600W and peaks at 5400W. Its dual-wheel handle design guarantees easy mobility. With ultra-fast charging and various charging methods, it caters to the evolving energy needs of modern lifestyles. The device, equipped with a large-capacity lithium battery expandable up to 4096Wh, provides reliable power to meet your needs. Enjoy your own life with the ATZ series.



## Technical parameters for main battery pack



Product model	ATZ3600EU
<b>AC input</b>	
Rated AC input voltage	230VAC
AC voltage range	200VAC~240VAC
Breakdown voltage	290VAC
AC input frequency	50Hz/60Hz
Rated AC input power	2300W
Overload protection relay	Yes
<b>DC input</b>	
Max. withstand voltage at PV input terminal	60VDC
PV controller type	MPPT
MPPT maximum efficiency	≥99.5%
MPPT voltage range	11VDC ~ 60VDC
Number of MPPTs	1
Max. PV charging current	20A
Max. DC input power	1200W
Car charging	12VDC/10A
<b>AC output</b>	
Rated output power (@25°C)	3600W (2300W in bypass mode)
3-second transient surge output power	5400W
Output voltage level	230VAC±3%
Output frequency level	It is 50 Hz in default, can be set to 60 Hz, error ± 0.2%
Output voltage waveform	Pure sine wave
Output voltage harmonic distortion	≤3%
<b>DC output</b>	
USB-A output	5VDC/3A*2
USB-C output	5VDC/3A
USB-C PD output	PD 100W * 2
Cigarette lighter output	12VDC/10A*2

Product model	ATZ3600EU
<b>Battery</b>	
Battery type	Lithium iron phosphate
Rated voltage	51.2VDC
Range of operating voltage	40.0VDC ~ 58.4VDC
Range of operating temperature	Discharging: -20°C ~ 50°C; Charging: 0°C ~ 50°C
Nominal capacity	2048Wh
<b>Charging time</b>	
AC charging	1.2 hours
Car charging	17 hours
Solar charging (1200W input power)	1.7 hours
AC charging plus maximum PV charging	1.2 hours
<b>Others</b>	
Charging environment temperature	0°C ~ 40°C
Discharging environment temperature	-20°C ~ 40°C
Recommended working environment temperature	20°C ~ 35°C
Storage environment temperature	1 month: -10°C ~ 50°C; 3 months: -10°C ~ 45°C; 6 months: -10°C ~ 30°C
Relative humidity	< 80%
Altitude	< 4000 meters
Protection degree	IP20
Communication mode	Bluetooth
Man-machine interface	Monochrome LCD, English interface
External dimensions (L*W*H)	456x290x391mm (without secondary battery pack) 456x290x537mm (with secondary battery pack)
Net weight	29.0kg (without secondary battery pack) 44.5Kg (with secondary battery pack)



Product model	ATZ3600-BATT
<b>Battery</b>	
Battery type	Lithium iron phosphate
Rated voltage	51.2VDC
Range of operating voltage	40.0VDC ~ 58.4VDC
Range of operating temperature	Discharging: -20°C ~ 50°C; Charging: 0°C ~ 50°C
Nominal capacity	2048Wh
<b>Discharging</b>	
Rated discharging power	1000W
<b>Charging</b>	
AC charging time	2.1 hours
AC charging power	1000W
Max. MPPT input power	1000W
MPPT voltage range	11VDC ~ 60VDC
Max. PV charging current	20A
Solar charging time(1000W input power)	2.1 hours
<b>Others</b>	
Charging environment temperature	0°C ~ 40°C
Discharging environment temperature	-20°C ~ 40°C
Recommended working environment temperature	20°C ~ 35°C
Storage environment temperature	1 month: -10°C ~ 50°C; 3 months: -10°C ~ 45°C; 6 months: -10°C ~ 30°C
Relative humidity	< 80%
Altitude	< 4000 meters
Protection degree	IP20
External dimensions (L*W*H)	428x196x224.4mm
Net weight	15.5kg

# 2048Wh Battery Capacity

## ► Powering Your Appliances



Tablet  
45 Cycles



Laptop  
35 Hrs



Cell phone  
101 Cycles



TV  
28.6 Hrs



Projector  
5.8 Hrs



Drones  
42 Cycles



Portable Refrigerator  
1.3 Hrs



Bluetooth Speaker  
87 Hrs



Fan  
35 Hrs



Coffee Maker  
1.5 Hrs



Blender  
8.5 Hrs



Rice Cooker  
4.5 Hrs



Camp Lantern  
175 Hrs



Induction Cooker  
1.1 Hrs



Thermal Kettle  
1 Hour



Electric Oven  
0.7 Hrs



Air Conditioner  
1.3 Hrs



# Certificates



# Diverse Output Ports: Meeting Daily Needs



Rated AC Output Power: 3600w  
Peak Output Power: 5400w

3600W





# Portable Design



LED Ambient Lighting

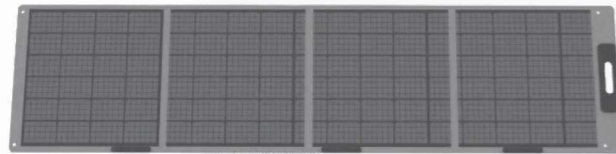


Dual-Wheel Handle Design



Heavy-Duty Casters

# Multiple Charging Methods: Solar, Car Charging, Diesel Generator



## Solar Power Charging

Full Charge for Main Battery Pack: 1.7 Hours



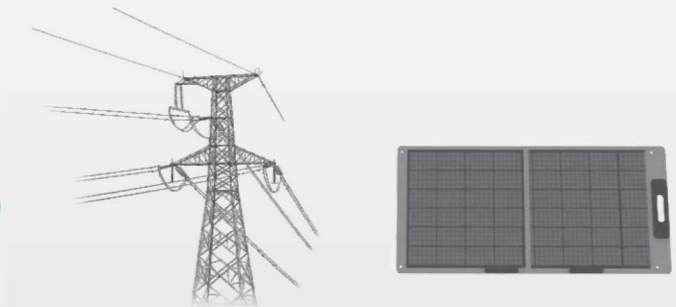
## Car Charging

Full Charge for Main Battery Pack: 17 Hours



## AC Charging

Full Charge for Main Battery Pack: 1.2 Hours



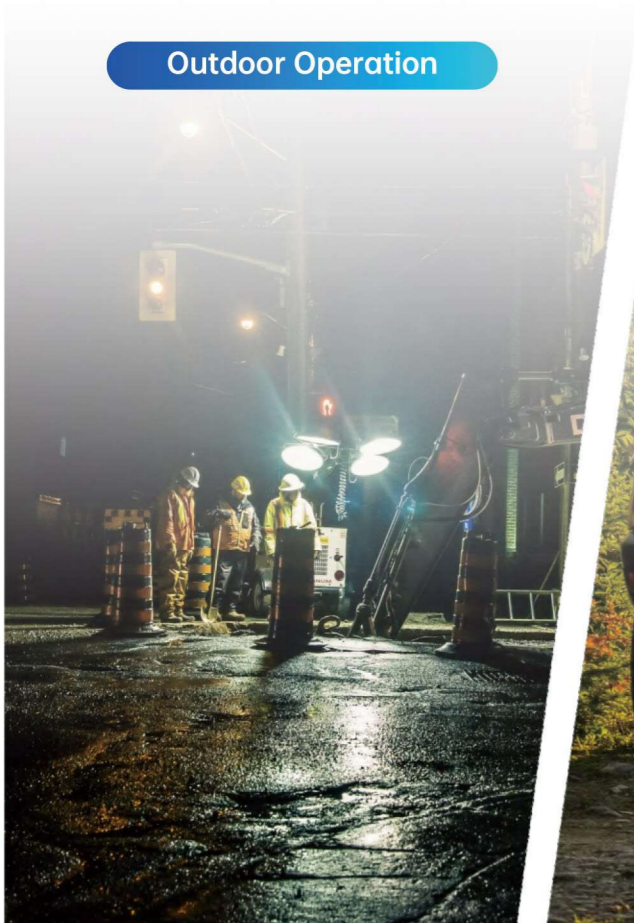
## Solar Charging + AC Charging

Charge the Battery at the Max. Allowable Power  
Full Charge for Main Battery Pack: 1.2 Hours

# Versatile Applications

Provide Power to 99% of Commonly Used Electrical Equipment

Outdoor Operation



RV Camping



Aerial Photography

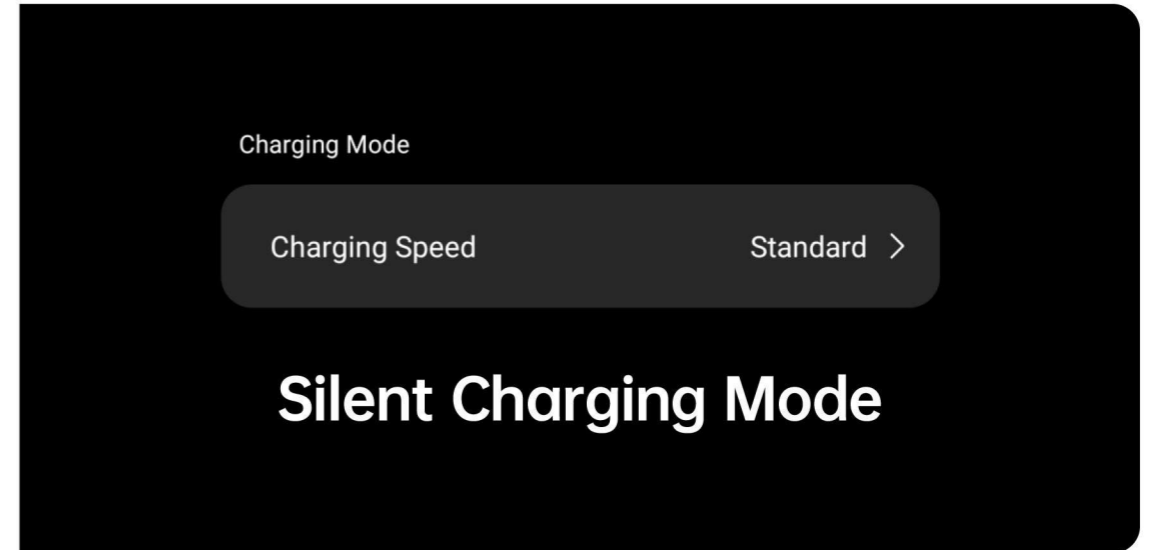
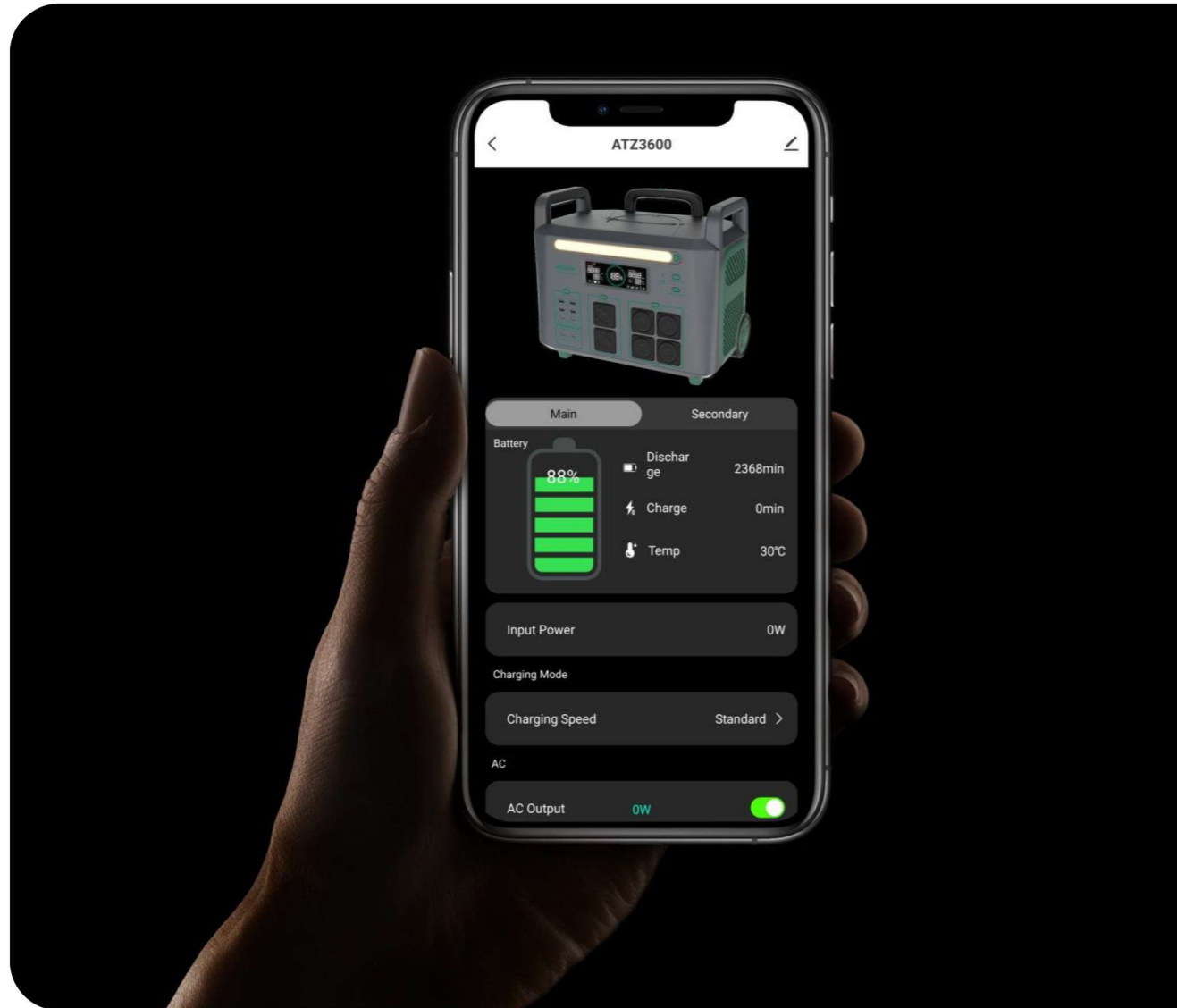


Home Backup Power



# Energy-Efficient and Low Noise

Energy-Saving Mode & Silent Charging Mode (Min. Noise: 30dB)



# Superfast Charging



Full Charge in 1.2 Hours

100%

## Large Capacity

2048Wh Lithium Battery, Expandable to 4096Wh (without external connection)



**Durable**

Energy Storage Lithium Battery Cell with BMS Management

**3000 CYCLES**



**BMS MANAGEMENT**

# Intelligent Management

Bluetooth for Monitoring, Infrared Remote Control

